

Product Catalog February 2020



# SIMPLE, EASY TO USE, HIGH PERFORMANCE



Available Through Cascade, Ottobock, PEL and Symbiont

**410-663-KISS (5477)**

9 am-4:30 pm, Mon-Fri, Eastern Time

**kiss-suspension.com**

U.S. Patents 6793682, 7771487, 7842099, 7883547, 8075631, 8182546, 9301859, 9492292, EP 1620046, EP 2231076, EP 2790613, CA 2702441, CA 2857513 and other U.S. and Worldwide Patents Pending. © 2020 Copyright, KISS Technologies, LLC. KISS® is a registered trademark. All Rights Reserved. Made in USA.

# Table of Contents

Page Product

## 1-2 KISS® Kits

- **Delrin KISS® Kit**  
KS1/A, KS1/B, KS1/C
- **4-Hole Endoskeletal KISS® Kit**  
KS2/A, KS2/B, KS2/C
- **4-Hole Angled Offset Base KISS® Kit**  
KS4/A, KS4/B, KS4/C
- **Pediatric Delrin KISS® Kit**  
PKS1/A, PKS1/B, PKS1/C
- **Pediatric 4-Hole Endoskeletal KISS® Kit**  
PKS2/A, PKS2/B, PKS2/C

## 3 KISS® Replacement Kits

- **KISS® Replacement Kit w/Adhesive Ready Placard**  
CMP31/A, CMP31/B, CMP31/C
- **KISS® Replacement Kit w/Velcro™ Sewn Placard**  
CMP32/A, CMP32/B, CMP32/C
- **Pediatric KISS® Replacement Kit w/ Pediatric Adhesive Ready Placard**  
PCMP31/A, PCMP31/B, PCMP31/C
- **Pediatric KISS® Replacement Kit w/ Pediatric Velcro™ Sewn Placard**  
PCMP32/A, PCMP32/B, PCMP32/C

## 4 KISS® Fabrication

- **Fabrication Kit**  
FN1/A, PFN1/A
- **Lamination Kit**  
CMP14/A, PCMP14/A
- **KISS® Adhesive**  
CMP11/A
- **Press Plate**  
CMP10/A, PCMP10/A
- **KISS® Dummy**  
CMP25/A

## 5-6 KISS® Distal Components

- **Distal Bases**  
CMP1/A, CMP2/A, CMP44/A, PCMP1/A, PCMP2/A
- **Distal Straps**  
CMP6/A, CMP6/B, CMP6/C,  
PCMP6/A, PCMP6/B, PCMP6/C

Page Product

## 5-6 KISS® Distal Components

- **Distal Screws**  
CMP8/A, PCMP8/A
- **Mufflers**  
CMP9/A, PCMP9/A
- **Pediatric Threaded Inserts**  
PCMP15/A

## 7-8 KISS® Proximal Components

- **Proximal Placards**  
CMP5/A, CMP5/B, CMP5/C  
PCMP5/A, PCMP5/B, PCMP5/C  
CMP22/A, CMP22/B, CMP22/C  
PCMP22/A, PCMP22/B, PCMP22/C
- **Proximal Straps**  
CMP7/A, CMP7/B, CMP7/C  
PCMP7/A, PCMP7/B, PCMP7/C
- **KISS® Anti Fray Sock Iron-Ons**  
CMP17/A
- **Proximal Nuts and Screws**  
CMP4/A, PCMP4/A

## 9 BK Componentry

- **KISS® One Way Expulsion Valves**  
CMP19/A, CMP19/B, CMP19/C
- **43/64" Reduced Shank Drill Bit**  
CMP20/A
- **KISS® Wrap Strap-R®**  
CMP24/A, CMP24/B, CMP24/C, CMP24/D,  
CMP24/E, CMP24/F, CMP24/G, CMP24/H
- **KISS® Soft Edge**  
CMP33/A, CMP33/B

## 10 Additional KISS® Innovations

- **KISS® Superhero**  
CMP26/A
- **KISS® Trainers**  
CMP27/A
- **KISS® SuperSlider**  
CMP28/A
- **KISS® SuperSlider / KISS® Superhero Combo**  
CMP29/A
- **KISS® Grip**  
CMP34/A

[www.kiss-suspension.com](http://www.kiss-suspension.com) • 410-663-KISS (5477) • KISS® Product Catalog February 2020

U.S. Patents 6793682, 7771487, 7842099, 7883547, 8075631, 8182546, 9301859, 9492292, EP 1620046, EP 2231076, EP 2790613, CA 2702441, CA 2857513 and other U.S. and Worldwide Patents Pending. © 2020 Copyright, KISS Technologies, LLC. KISS® is a registered trademark. All Rights Reserved. Made in USA.



# KISS® Kits

## Delrin KISS® Kit

This KISS® Kit features a delrin distal base which can be laminated into a socket or vacuum formed in a flexible inner socket. It includes an aluminum tab to assist in fabrication. **Designed for a 1 socket, 2 liner application**



**KS1/A**  
Beige



**KS1/B**  
Black



**KS1/C**  
Brown

### Applications:

- Flexible Inner Socket
- Contracture Accommodation

### Requirements:

- Covered roll on locking liner

**Total Build Height:** 3mm

### Includes 8 Components:

- (1) CMP1/A – Delrin Distal Base
- (1) CMP5/A, B or C – Adhesive Ready Placard Set
- (1) CMP22/A, B or C – Velcro™ Placard Set  
Includes Proximal Nuts and Screws
- (1) CMP7/A, B or C – Proximal Strap Set
- (1) CMP6/A, B or C – Distal Strap Set
- (1) CMP8/A – Distal Stainless Screw Set
- (1) CMP9/A – KISS® Muffler Set
- (2) Additional proximal nuts

## 4-Hole Endo KISS® Kit

This KISS® Kit features an aluminum 4-Hole endo distal base, which also serves as an attachment base for endoskeletal componentry. It also easily retrofits with PDI™ and Bulldog™ shuttle locks. It includes an aluminum tab to assist in fabrication. Lamination adaptor and spacer screws sold separately (CMP14/A). **Designed for a 1 socket, 2 liner application.**



**KS2/A**  
Beige



**KS2/B**  
Black



**KS2/C**  
Brown

### Applications:

- Serves as an endoskeletal attachment base
- Retro fits with PDI™ and Bulldog™ locks

### Requirements:

- Covered roll on locking liner.

**Total Build Height:** 3mm

**Weight Limit:** 330 lbs

**Torque:** 12 N-m

### Includes 8 Components

- (1) CMP2/A – 4-Hole Endo Distal Base
- (1) CMP5/A, B or C – Adhesive Ready Placard Set
- (1) CMP22/A, B or C – Velcro™ Placard Set  
Includes Proximal Nuts and Screws
- (1) CMP7/A, B or C – Proximal Strap Set
- (1) CMP6/A, B or C – Distal Strap Set
- (1) CMP8/A – Distal Stainless Screw Set
- (1) CMP9/A – KISS® Muffler Set
- (2) Additional proximal nuts

## 4-Hole Angled Offset Base KISS® Kit

This KISS® Kit features an aluminum 4-Hole angled offset base that can be laminated into a socket with a single lamination. It is angled 12° and has a 4-hole pattern that is offset posteriorly .75 inches for enhanced alignment for hip flexor tightness. It includes an aluminum tab to assist in fabrication. Lamination adaptor and spacer screws sold separately (CMP14/A). **Designed for a 1 socket, 2 liner application**



**KS4/A**  
Beige



**KS4/B**  
Black



**KS4/C**  
Brown

### Applications:

- Serves as an endoskeletal attachment base for a single wall socket
- Allows for enhanced alignment for hip flexor tightness

### Requirements:

- Covered roll on locking liner

**Total Build Height:** 1cm

**Torque:** 12 N-m

### Includes 8 Components

- (1) CMP44/A – 4-Hole Angled Offset Base
- (1) CMP5/A, B or C – Adhesive Ready Placard Set
- (1) CMP22/A, B or C – Velcro™ Placard Set  
Includes Proximal Nuts and Screws
- (1) CMP7/A, B or C – Proximal Strap Set
- (1) CMP6/A, B or C – Distal Strap Set
- (1) CMP8/A – Distal Stainless Screw Set
- (1) CMP9/A – KISS® Muffler Set
- (2) Additional proximal nuts

# Pediatric KISS® Kits

## Pediatric Delrin KISS® Kit

This Pediatric KISS® Kit features a delrin distal base which can be laminated into a socket or vacuum formed in a flexible inner socket. It includes an aluminum tab to assist in fabrication. **Designed for a 1 socket, 2 liner application**



**PKS1/A  
Beige**



**PKS1/B  
Black**



**PKS1/C  
Brown**

### Applications:

- Flexible Inner Socket
- Contracture Accommodation

### Requirements:

- Covered roll on locking liner

**Total Build Height:** 2mm

### Includes 8 Components:

- (1) PCMP1/A – Pediatric Delrin Distal Base
- (1) PCMP5/A, B or C – Pediatric Adhesive Ready Placard Set
- (1) PCMP22/A, B or C – Pediatric Velcro™ Placard Set  
Includes Ped Proximal Nuts and Screws
- (1) PCMP7/A, B or C – Pediatric Proximal Strap Set
- (1) PCMP6/A, B or C – Pediatric Distal Strap Set
- (1) PCMP8/A – Pediatric Distal Stainless Screw Set
- (1) PCMP9/A – Pediatric KISS® Muffler Set
- (1) PCMP15/A – 10mm-6mm Distal Threaded Insert
- (2) Additional proximal nuts

## Pediatric 4-Hole Endo KISS® Kit

This Pediatric KISS® Kit features an aluminum 4-Hole endo distal base, which also serves as an attachment base for endoskeletal componentry. It includes an aluminum tab to assist in fabrication. Lamination adaptor and spacer screws sold separately (PCMP14/A). **Designed for a 1 socket, 2 liner application**



**PKS2/A  
Beige**



**PKS2/B  
Black**



**PKS2/C  
Brown**

### Applications:

- Serves as an endoskeletal attachment base
- Retro fits with PDI™ and Bulldog™ locks

### Requirements:

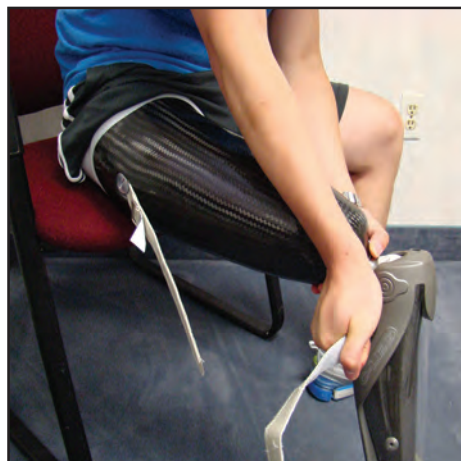
- Covered roll on locking liner.

**Total Build Height:** 2mm

**Thread:** 5mm

### Includes 8 Components:

- (1) PCMP2/A – Pediatric 4-Hole Endo Distal Base
- (1) PCMP5/A, B or C – Pediatric Adhesive Ready Placard Set
- (1) PCMP22/A, B or C – Pediatric Velcro™ Placard Set  
Includes Pediatric Proximal Nuts and Screws
- (1) PCMP7/A, B or C – Pediatric Proximal Strap Set
- (1) PCMP6/A, B or C – Pediatric Distal Strap Set
- (1) PCMP8/A – Pediatric Distal Stainless Screw Set
- (1) PCMP9/A – Pediatric KISS® Muffler Set
- (1) PCMP15/A – 10mm-6mm Distal Threaded Insert
- (2) Additional proximal nuts





# KISS® Replacement Kits

## KISS® Replacement Kit w/ Adhesive Ready Placard



**CMP31/A**  
Beige



**CMP31/B**  
Black



**CMP31/C**  
Brown

### Each Kit Includes:

- (1) Distal Strap
- (1) Proximal Strap
- (1) Adhesive Ready Placard
- (1) Distal Stainless Screw
- (1) Proximal Nut and Screw

## KISS® Replacement Kit w/ Velcro™ Sewn Placard



**CMP32/A**  
Beige



**CMP32/B**  
Black



**CMP32/C**  
Brown

### Each Kit Includes:

- (1) Distal Strap
- (1) Proximal Strap
- (1) Velcro™ Sewn Placard includes Nut and Screw
- (1) Distal Stainless Screw

## Pediatric KISS® Replacement Kit w/ Adhesive Ready Placard



**PCMP31/A**  
Beige



**PCMP31/B**  
Black



**PCMP31/C**  
Brown

### Includes:

- (1) Pediatric Distal Strap
- (1) Pediatric Proximal Strap
- (1) Pediatric Adhesive Ready Placard
- (1) Pediatric Distal Stainless Screw
- (1) Pediatric Proximal Nut and Screw
- (1) Threaded Distal Insert, 10mm-6mm

## Pediatric KISS® Replacement Kit w/ Velcro™ Sewn Placard



**PCMP32/A**  
Beige



**PCMP32/B**  
Black



**PCMP32/C**  
Brown

### Includes:

- (1) Pediatric Distal Strap
- (1) Pediatric Proximal Strap
- (1) Pediatric Velcro™ Sewn Placard Includes Pediatric Nut and Screw
- (1) Pediatric Distal Stainless Screw
- (1) Threaded Distal Insert, 10mm-6mm

# KISS® Fabrication

## Fabrication Kits

### Adhesive Fabrication Kit



**FN1/A**

This Fabrication Kit includes components needed to attach a KISS® Placard using adhesive. This is not needed for attaching by Velcro™. Will last 20+ applications.

**Includes:**

- (2) CMP10/A – Press Plates
- (1) CMP11/A – KISS® Adhesive

### Pediatric Adhesive Fabrication Kit



**PFN1/A**

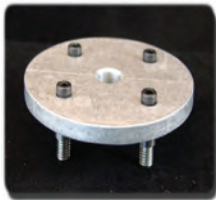
This Pediatric Fabrication Kit includes components needed to attach a KISS® Pediatric Placard using adhesive. This is not needed for attaching by Velcro™. **Will last 20+ applications.**

**Includes:**

- (2) PCMP10/A-Pediatric Press Plates
- (1) CMP11/A-KISS® Adhesive

## Lamination Kits

### 4-Hole Lamination Kit



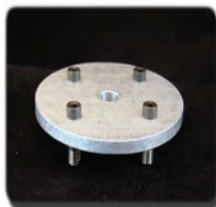
**CMP14/A**

This reusable lamination kit allows for the easy lamination of the 4-Hole Endo Distal Base (CMP2/A) and the 4-Hole Angled Offset Distal base (CMP44/A).

**Includes:**

- 1 Lamination adaptor with spacer screws

### Pediatric 4-Hole Lamination Kit



**PCMP14/A**

This reusable pediatric lamination kit allows for the easy lamination of the Pediatric 4-Hole Endo Distal Base (PCMP2/A).

**Includes:**

- (1) Pediatric Lamination adaptor with spacer screws

## Liner Attachment

### Press Plate



**CMP10/A**

This reusable plate is used to mount the KISS® Placard when attaching by adhesive. This is not needed for attaching by Velcro™.

**Includes:**

- (1) Press Plate

### Pediatric Press Plate



**PCMP10/A**

This reusable Pediatric plate is used to mount the KISS® Pediatric Placard when attaching by adhesive. This is not needed for attaching by Velcro™.

**Includes:**

- (1) Pediatric Press Plate

## KISS® Adhesive



**CMP11/A**

This specially formulated, flexible, ultra quick drying adhesive is used to attach both; the Proximal Placard when attaching by Adhesive, and the KISS® BK One Way Expulsion Valve.

**Contains 20+ applications.**

**Includes:**

- (2) Bottles

## KISS® Dummy™



**CMP25/A**

Use the KISS® Proximal Dummy for clean, consistent proximal socket exit holes. It can be reused many times if care is taken when grinding.

**Includes:**

- (1) Proximal Exit Dummy



# KISS® Distal Components

## Distal Bases

### Delrin Distal Base



**CMP1/A**

This base can be laminated into a socket or vacuum formed into a flexible inner socket. It is also an ideal solution to complex flexion contracture cases.

**Build Height:** 3mm  
**Diameter:** 2¾"  
**Tapered Sides**

**Includes:**  
(1) Distal Base  
(1) Fabrication Tab

### 4-Hole Endo Distal Base



**CMP2/A**

This base is constructed of aircraft grade aluminum and can be laminated into a socket. It also serves as an attachment base for endoskeletal componentry. This base will easily retrofit with PDI™ and Bulldog™ locks. **Lamination adaptor and spacer screws sold separately (CMP14/A).**

**Build Height:** 3mm  
**Diameter:** 2¾"  
**Tapered Sides**  
**Weight Limit:** 330 lbs  
**Torque:** 12 N-m

**Includes:**  
(1) Distal Base  
(1) Fabrication Tab

### 4-Hole Angled Offset Base



**CMP44/A**

This base is constructed of aircraft grade aluminum and can be laminated into a socket with a single lamination. It is angled 12° and has a 4-hole pattern that is offset posteriorly .75 inches for enhanced alignment for hip flexor tightness. **Lamination adaptor and spacer screws sold separately (CMP14/A).**

**Build Height:** 1cm  
**Diameter:** 2¾"  
**Tapered Sides**  
**Torque:** 12 N-m

**Includes:**  
(1) Distal Base  
(1) Fabrication Tab

### Pediatric Delrin Distal Base



**PCMP1/A**

This pediatric base can be laminated into a socket or vacuum formed into a flexible inner socket. It is also an ideal solution to complex flexion contracture cases.

**Build Height:** 2mm  
**Diameter:** 2"  
**Tapered Sides**

**Includes:**  
(1) Pediatric Distal Base  
(1) Fabrication Tab

### Pediatric 4-Hole Endo Distal Base



**PCMP2/A**

This pediatric base is constructed of aircraft grade aluminum and can be laminated into a socket. It also serves as an attachment base for endoskeletal componentry. **Lamination adaptor and spacer screws sold separately (PCMP14/A).**

**Build Height:** 2mm  
**Diameter:** 2"  
**Tapered Sides**  
**Thread:** 5mm

**Includes:**  
(1) Pediatric Distal Base  
(1) Fabrication Tab

## Distal Straps

### Distal Strap Set

These straps attach to the end of the locking liner. They secure the limb distally by feeding through the base and joining the proximal straps. The strap is easily fed through the distal base while donning.

**Includes:** (2) Distal Straps



**CMP6/A**  
**Beige**



**CMP6/B**  
**Black**



**CMP6/C**  
**Brown**

### Pediatric Distal Strap Set

These pediatric straps attach to the end of the locking liner. They secure the limb distally by feeding through the base and joining the proximal straps. The strap is easily fed through the distal base while donning.

**Includes:** (2) Pediatric Distal Straps



**PCMP6/A**  
**Beige**



**PCMP6/B**  
**Black**



**PCMP6/C**  
**Brown**

# KISS® Distal Components

## Distal Screws

### Distal Stainless Screw Set



These screws secure the distal strap to the distal end of the locking liner.

These are designed for adult liners.

**Includes:**

(2) Distal Stainless Screws

**CMP8/A**

## Distal Threaded Insert

### 10mm-6mm Distal Threaded Insert



These are 10mm-6mm, stainless steel, distal inserts to be used for low profile attachment. (Use Component PCMP16/A for a Distal Threaded Insert For Ossur™ Liners.)

**Includes:**

(2) Stainless Distal Inserts

**PCMP15/A**

### Pediatric Distal Stainless Screw Set



Specially designed to work with Pediatric Lower and Upper Extremity locking liners, these screws secure the distal strap to the distal end of the locking liner.

Works with PCMP15/A, a 10mm-6mm threaded insert.

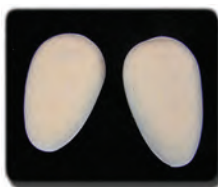
**Includes:**

(2) Pediatric Distal Stainless Screws

**PCMP8/A**

## Mufflers

### KISS® Muffler Set



These mufflers eliminate unwanted air noise. They are sewn to the distal strap and fit snugly in the distal base.

**Includes:**

(2) Mufflers

**CMP9/A**

### Pediatric KISS® Muffler Set



The pediatric mufflers eliminate unwanted air noise. They are sewn to the distal strap and fit snugly in the distal base. Designed small for pediatric lower and upper extremity applications.

**Includes:**

(2) Pediatric Mufflers

**PCMP9/A**



# KISS® Proximal Components

## Proximal Placards

### Adhesive Ready Placard Set

This ultra flexible placard attaches proximally to the liner by adhesive. It can be mounted using KISS® Adhesive. This placard is not removable after attachment.

**Includes:**

(2) Adhesive Ready Placards



**CMP5/A**  
**Beige**



**CMP5/B**  
**Black**



**CMP5/C**  
**Brown**



**CMP22/A**  
**Beige**



**CMP22/B**  
**Black**



**CMP22/C**  
**Brown**

### Pediatric Adhesive Ready Placard Set

This pediatric ultra flexible placard attaches proximally to the liner by adhesive. It can be mounted using KISS® Adhesive. This placard is not removable after attachment.

**Includes:**

(2) Pediatric Adhesive Ready Placards



**PCMP5/A**  
**Beige**



**PCMP5/B**  
**Black**



**PCMP5/C**  
**Brown**



**PCMP22/A**  
**Beige**



**PCMP22/B**  
**Black**



**PCMP22/C**  
**Brown**

### Pediatric Velcro™ Sewn Placard Set

This pediatric placard attaches proximally to the liner using Velcro™. The pediatric proximal nut is sewn into each placard. This placard is removable after attachment.

**Includes:**

(2) Pediatric Velcro™ Sewn Placards, (2) Pediatric Nuts and (2) Pediatric Screws

# KISS® Proximal Components

## Proximal Straps

### Proximal Strap Set

This strap attaches to the KISS® Placard and exits the socket through a proximal aperture. The distal strap is fed up through the d-ring on this proximal strap.

**Includes:** (2) Proximal Straps



**CMP7/A**  
Beige



**CMP7/B**  
Black



**CMP7/C**  
Brown

## KISS® Anti Fray Sock Iron-ons

### Anti Fray Sock Iron-ons

When using a sock with KISS® these iron-ons prevent fraying. Most socks are made with reinforced distal holes, but KISS® also requires a reinforced proximal hole. Securely reinforce any hole you cut in a sock, and eliminate fray.

**Includes:** (12) Anti Fray Iron-ons



**CMP17/A**

### Pediatric Proximal Strap Set

This pediatric strap attaches to the pediatric KISS® Placard and exits the socket through a proximal aperture. The pediatric distal strap is fed up through the d-ring on this proximal strap.

**Includes:** (2) Pediatric Proximal Straps



**PCMP7/A**  
Beige



**PCMP7/B**  
Black



**PCMP7/C**  
Brown

## Proximal Nuts and Screws

### Proximal Nut and Screw Set

This nut and screw set attaches the Proximal Strap to the Proximal Placard.

**Includes:** (2) Nuts, (2) Screws



**CMP4/A**

### Pediatric Proximal Nut and Screw Set

This pediatric sized nut and screw set attaches the Pediatric Proximal Strap to the Pediatric Proximal Placard.

**Includes:** (2) Pediatric Nuts, (2) Pediatric Screws



**PCMP4/A**



## Low Profile Expulsion Valves

### One Way Expulsion Valve



This valve is incredibly low profile, ultra lightweight, and low cost.

- 1mm Build Height
- Less than 1/10 of an Oz.
- Integrated Filter
- Ultra Quiet

**CMP19/A**

Includes: (1) valve

**43/64" or 17mm  
Hole Required**

**10 Pack: CMP19/B, 30-Pack: CMP19/C**

## Expulsion Valve Installation

### Reduced Shank Drill Bit



This drill bit can be used to install the KISS® one way expulsion valve, CMP19/A. To ensure proper fit, a 43/64" drill bit OR 17mm drill bit must be used to install the KISS® one way expulsion valve.

- Size: 43/64"
- Reduced Shank

Includes: (1) Drill Bit

**CMP20/A**

## Suspension Sleeve Protection

### KISS® Soft Edge

Superior Suspension Sleeve protection at the proximal socket edge.

Includes: (1) 60" Strip



**CMP33/A  
Beige**



**CMP33/B  
Black**

## Removable Transtibial Linkage

### KISS® WrapStrap-R®

Residue Free, Removable Linkage

- Prevents doffing inversion and donning dislodging
- Stops under sleeve air leakage
- Reliable and strong construction
- Low profile, fully adjustable
- Tapeless and Removable

Includes: (1) KISS® WrapStrap-R®



**CMP24/A  
Beige**

**10-Pack: CMP24/B**



**CMP24/C  
Gray**

**10-Pack: CMP24/D**



**CMP24/E  
Black**

**10-Pack: CMP24/F**



**CMP24/G  
Brown**

**10-Pack: CMP24/H**

# Additional KISS® Innovations

## KISS® Superhero™

This reusable test socket plate allows for easy removal of casting tape without damaging the plate.

**Includes:** (1) Test Socket Plate



**CMP26/A**

## KISS® Grip

Special material used to convert non Velcro™ compatible covered locking liners to allow for use with proximal KISS® Velcro™ Placards.

**Includes:** (2) KISS® Grips



**CMP34/A**

## KISS® SuperSlider™

This reusable slider allows Test Socket linear alignment changes in the transverse plane. For in office test socket use only, not for definitive use.

**Includes:** (1) Slider



**CMP28/A**

## KISS® Trainers™

Dynamic Flexible Keel Stubby Feet

**Includes:** (1) Pair



**CMP27/A**

## KISS® SuperSlider™/ KISS® Superhero™ Combo

Maximize Test Socket Dynamic alignment with this reusable combo. Add a pyramid or receiver to the slider for ultimate test socket slide and angular alignment. SuperSlider™ is for in office test socket use only, not for definitive use.

**Includes:** (1) Slider, (1) Test Socket Plate



**CMP29/A**





---

**[www.kiss-suspension.com](http://www.kiss-suspension.com) • 410-663-KISS (5477) • KISS® Product Catalog February 2020**

U.S Patents 6793682, 7771487, 7842099, 7883547, 8075631, 8182546, 9301859, 9492292, EP 1620046, EP 2231076, EP 2790613, CA 2702441, CA 2857513 and other U.S. and Worldwide Patents Pending. © 2020 Copyright, KISS Technologies, LLC. KISS® is a registered trademark. All Rights Reserved. Made in USA.